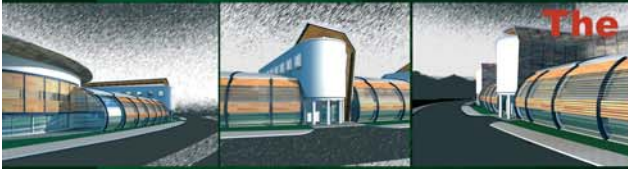


The Headquarters of Wuxi Life Science Park

—A Sustainable Construction Design



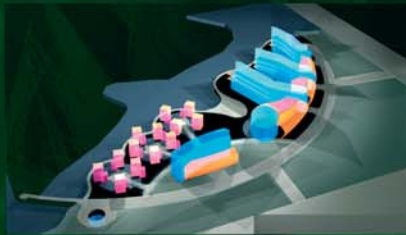
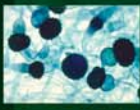
1 Brief Introduction

In 2002, Wuxi life science Park was planned in Wuxi, Jiangsu province, China. This Industry Park will absorb many biology and medicine enterprises all over the world to set up plants inside. The masterplan of the park was designed by Terry Farrell & Partners.

As the first building in the park, the headquarters of wuxi life science park is sited on the entrance of the new planned industry district. It provides services to the company which invested the park and at the same time offers rented offices to these enterprises which set up plants in the park. The headquarters consists of a conference center, a small hotel, three independent office buildings, three groups of rented houses and other relevant facilities. Its total area amounts to 12,000 sq.m..



site of the headquarters in the park



2 Challenges and Problems

A Site

—The shape of the site is triangular. One side has good scenery facing a small lake, the others face the roads.

B Complexity

This complex includes many small buildings of different functions.

C Form

— Most enterprises in this park are related to medicine and biology, the aim is to find exact form and concept for those works.



3 Strategy and Themes

A Life

— The origin and form of life.

B Accrete

— The ideal relationship between life and circumstance is to grow together.

C Movement

— Movement is an essence of life. As a sustainable building, like most life-form, movement is a basic living mode to react the variety of the environment.



4 Creation

A Life Study

— Through the study of the evolution of biology, you will find that the form of life origin from unicellular animals and gradually transform to spinal column animals. Linear structure means the base level of creature.

B Harmony

— Not like Descartes' viewpoint, in Chinese traditional philosophy, creature belongs to circumstance and nature, without the separation of subject and object. There is harmony between architecture and environment.

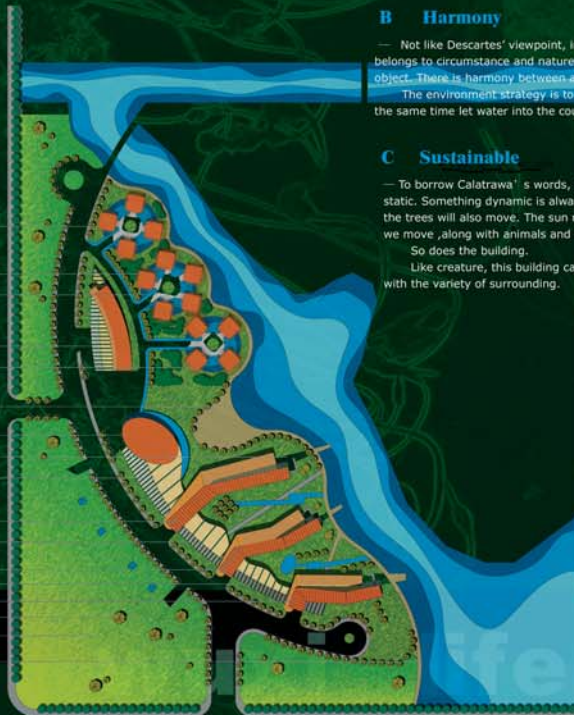
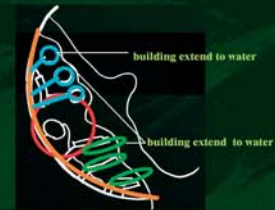
The environment strategy is to make buildings extend back to water, and at the same time let water into the court of the buildings.

C Sustainable

— To borrow Calatrava's words, a landscape should never be seen as static. Something dynamic is always happening. As soon as the wind blows, the trees will also move. The sun moves. The shadows and clouds move, we move, along with animals and machines.

So does the building.

Like creature, this building can accrete with circumstance and change with the variety of surrounding.



Author: Jiang Liu
 c/o Ass.Prof.Dr.Li Zhenyu
 College of Architecture and Urban Planning at the Tongji University
 Niping Road 1239
 Shanghai 200092
 China, P.R.
 email: lj_lijiang@hotmail.com

life science park